

**207 Bowery - Unit # 7 Huge 3 Br Duplex Penthouse, 16ft ceilings.
Description**

Brand new 2,400 sq ft. 3 Br loft style penthouse, located on the border of Nolita and the Bowery. The unit has 16ft ceilings with a 500sq ft open duplex mezzanine. The unit has 3 elegant marble bathrooms. Private elevator keyed entry. Private wraparound terrace in front bedroom and private patio in the rear. Kitchen is equipped with granite countertops, marble flooring, high end appliances and dishwasher. Each unit controls its own heat, hot water and air conditioning. Unit is flooded with windows and sunlight; there are a total of 16 windows throughout the unit and 2 sliding glass doors facing three exposures. Hardwood floors throughout and great city views.

Listing Info:

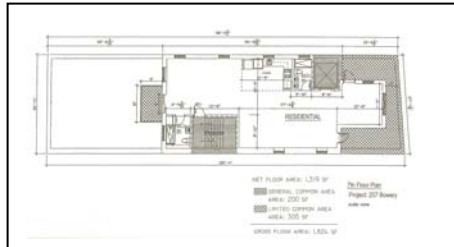
Listing # : Bow07
Price 2,371,200
CC : 855.51
RE Tax : 1,195.56
Type : Condo

Unit Info:

Neighborhood : Nolita
Beds : 3
Bathrooms : 3
Rooms : 7.5
Approx SQFT : 2400 (w mez)
Building Type : Elevator Bldg

Amenities:

- 16 ft ceilings / 500 sq ft mezzanine bedroom
- Private Keyed Elevator Entry
- Jacuzzi bath
- private wraparound 305 sq ft. terrace.
 - Additional 132 sq ft outdoor patio
- Marble Bath
- Stainless steel appliances
- Hardwood Floors
- Great City View
- Washer / Dryer
- Dishwasher



Michael J. Crespo

Broker
 Citadel Property Management Corp.
 530 East 13th Street
 New York, NY 10009
 Office: 646.654.0722
 Cell: 917.363.0395
 Email: m Crespo@citadelnyc.com
 Website: www.citadelnyc.com

